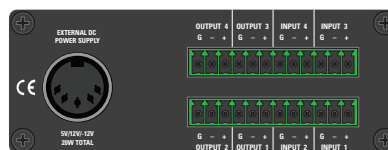
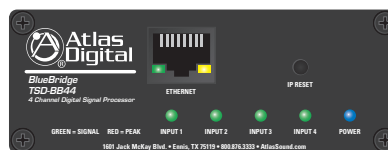
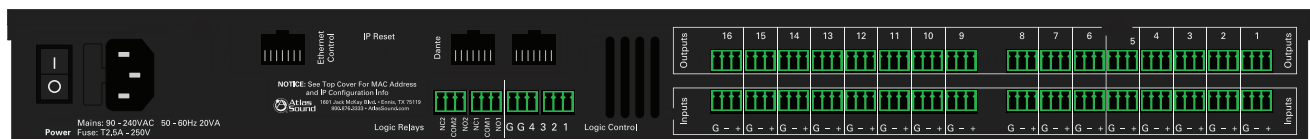




## BlueBridge Control Page Reference Guide



This is the BluePanel Reference Guide for creating BluePanel control pages for use with an Atlas Digital BlueBridge DSP platform. The programs used to create a BluePanel or TouchPanel design and the software used to operate the panels are two separate software applications. BlueBridge is used for creating the design and the BluePanel program for operating a BluePanel control on a control device. BluePanel application software is intended for use with a range of devices used to control audio systems.

BluePanel software enhances the capabilities of the BlueBridge DSP platform by providing an elegant and simple way for untrained users to control a BlueBridge audio system. The BluePanel application and associated control devices can be used with any of the BlueBridge family of DSP platforms including the compact TSD models with their small footprint.

This guide will take you through the process of creating a BluePanel control file that can be used on computers. The process in this guide for creating controls can be applied to any of the control elements within BlueBridge including the proprietary TouchPanel (BBWP-TOUCH7), but in some cases it may not be practical to allow an untrained user access to certain aspects of the system.

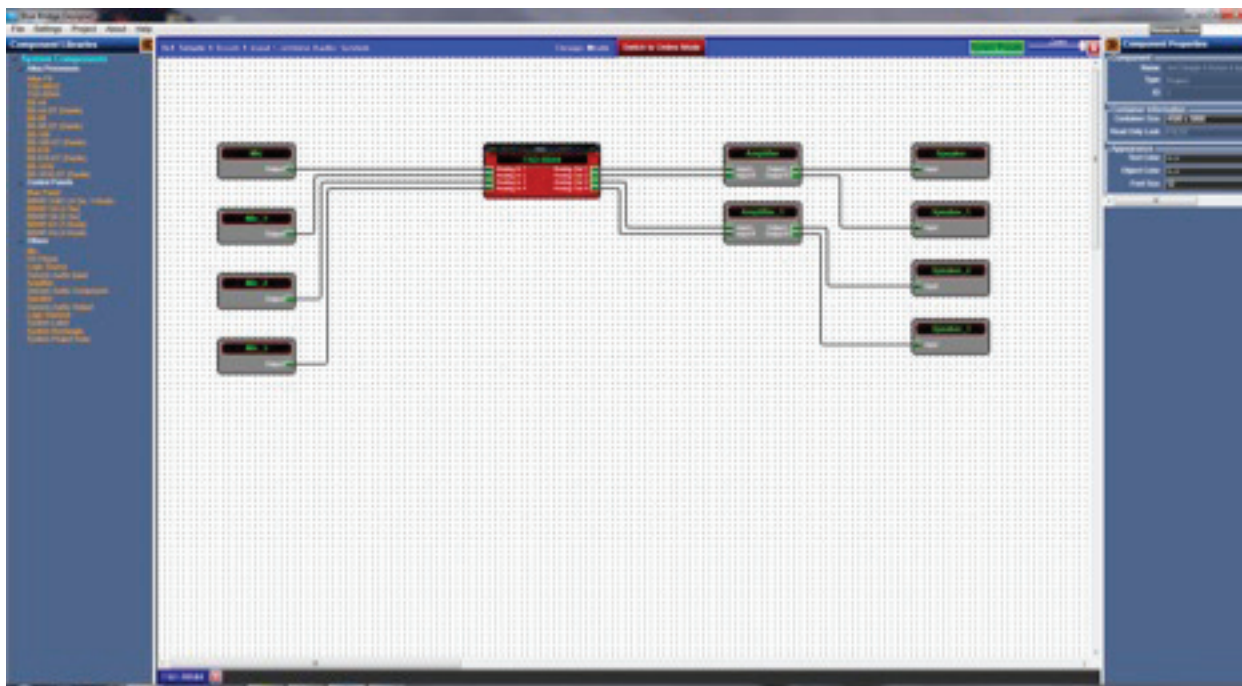
#### First Step:

Begin your session by opening BlueBridge software and opening a BlueBridge file you have already created.

BluePanel and BBWP-TOUCH7 Touch Panel Control.

To create a BluePanel control page have a system design to work from.

For our example, we select a TSD-BB44 in a simple four microphone input and four output design.

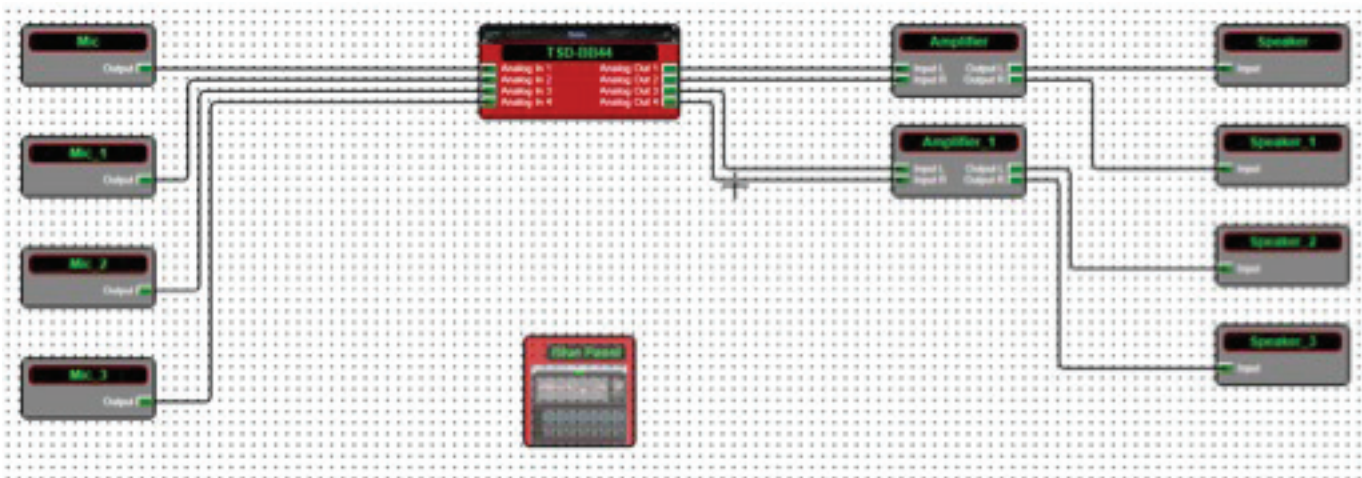


(Fig2.1)

First, drag and drop a BluePanel block into the design. The BluePanel block is located in the Components Library in the Control Panels section see (fig2.2).



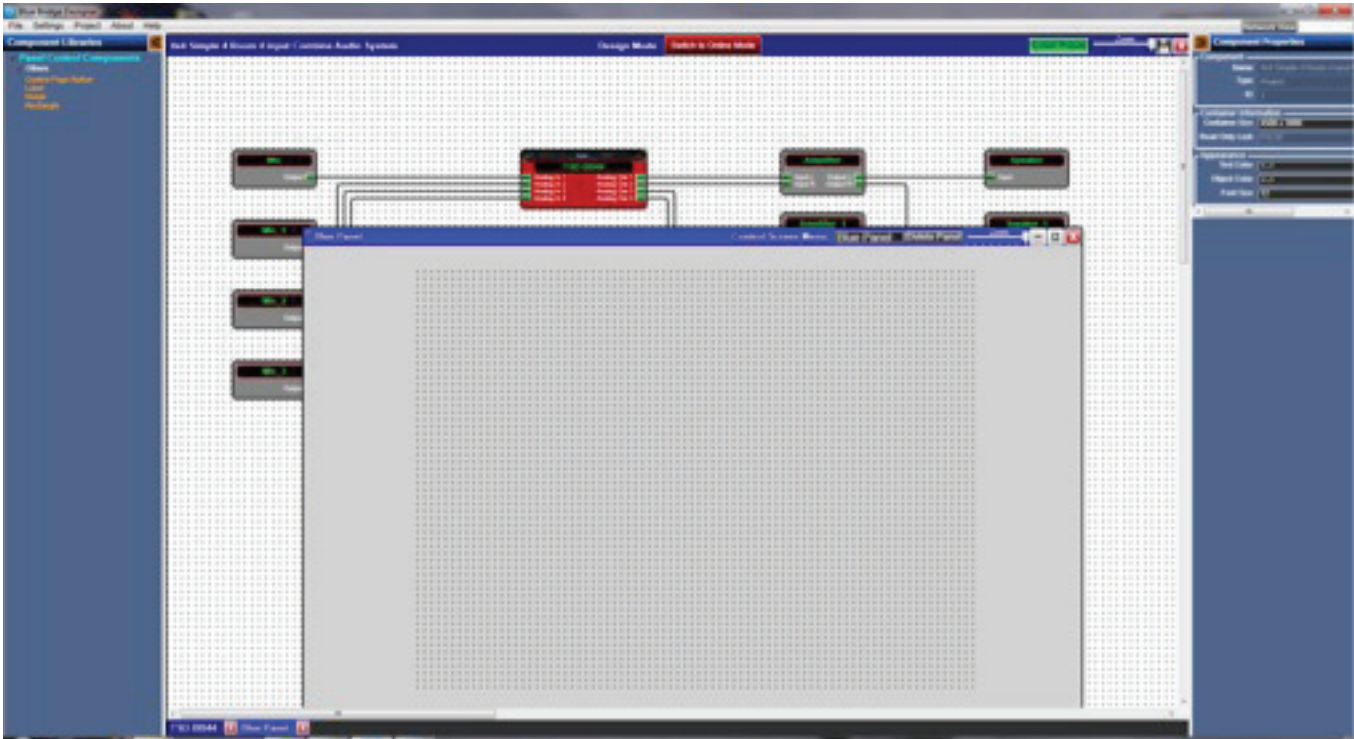
(Fig2.2)



(Fig2.3)

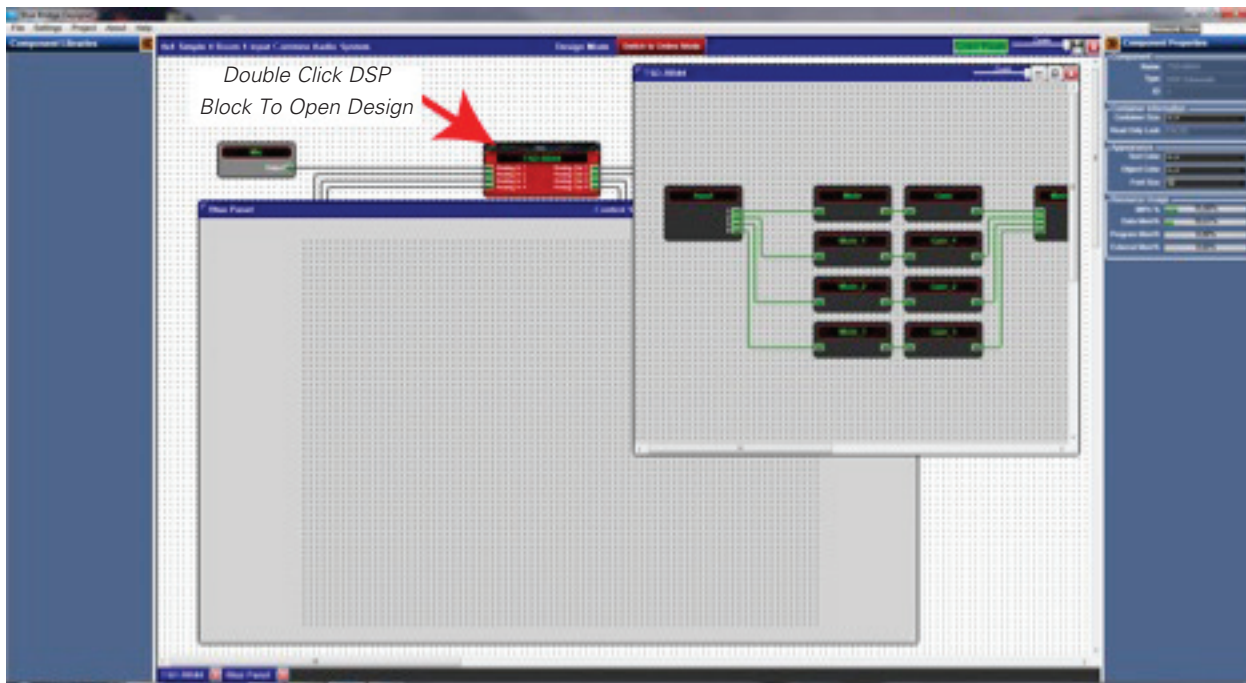


Once the BluePanel block has been dropped into the design, double click on it to open the BluePanel window.



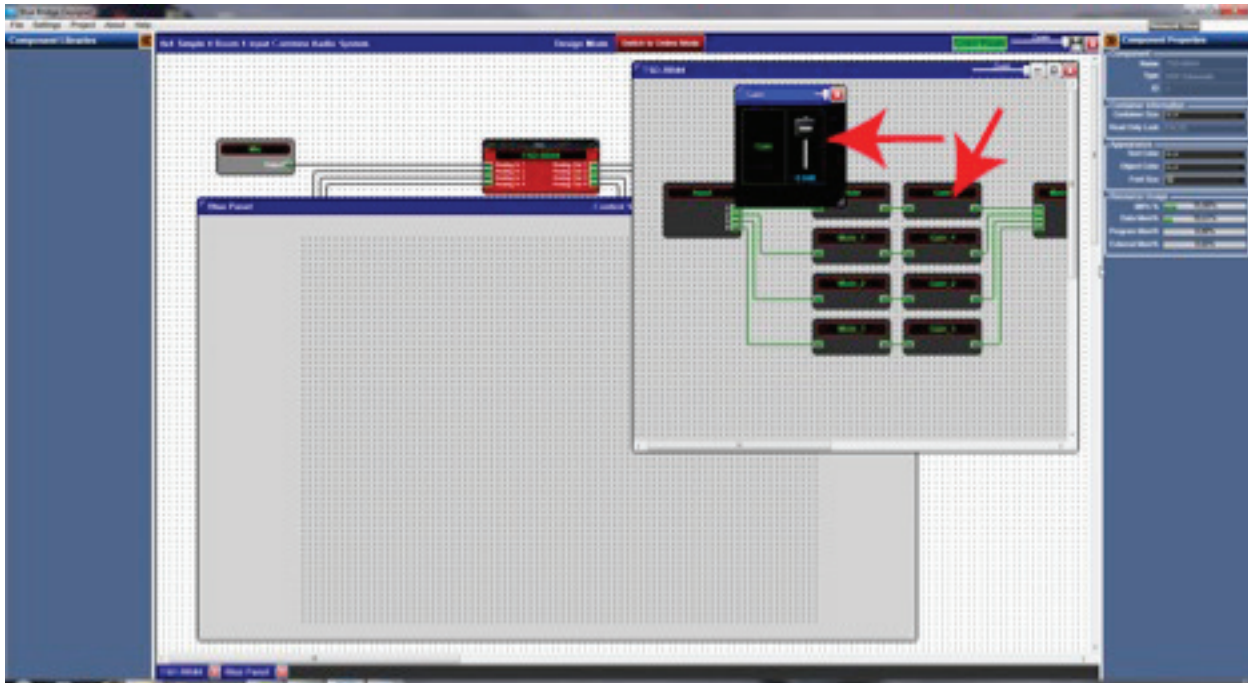
(fig2.4)

After a blank BluePanel screen opens, drag and drop control elements into the BluePanel window. Double click on the DSP Hardware block to open the system design file and determine the control element(s) needed.

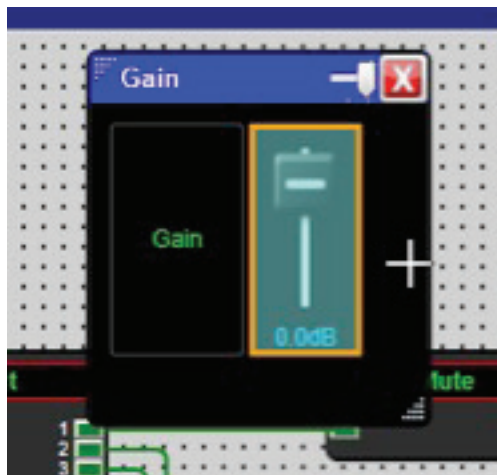


(fig2.5)

In this example, the gain controls are selected to put into the BluePanel control.  
Double click the Gain DSP block to open and select the specific fader by left click+holding as outlining the fader, see (fig2.7).

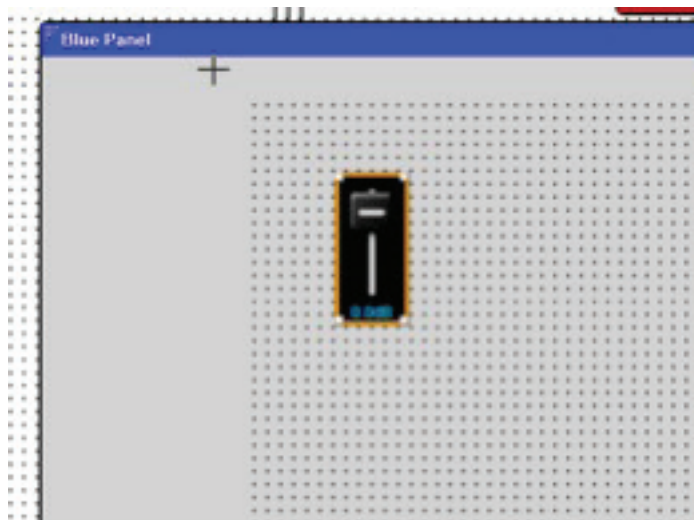


(fig2.6)



(fig2.7)

Select and highlight the fader, then drag and drop it into the BluePanel window. (Left click+hold then drag and let go), see (fig2.7)



(fig2.8)

After adding a control element to the design, assign a label from the Component Libraries. The labels are located in the left column of the design software window.



(fig2.9)

Left (click+hold) the Label and drag onto the BluePanel window



(fig2.10)



(fig2.11)

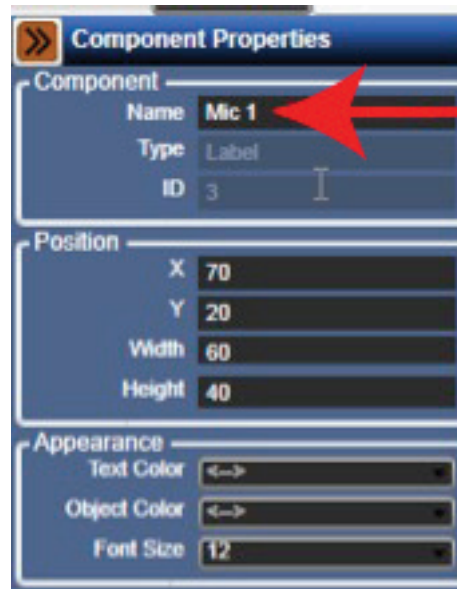
The text box will be much smaller than in (fig2.10)

To enter text, go to Component Properties on the right side of the window and enter text. The text properties like font size and color can be changed as well as the size of the text box. Note: the text box size can also be changed by



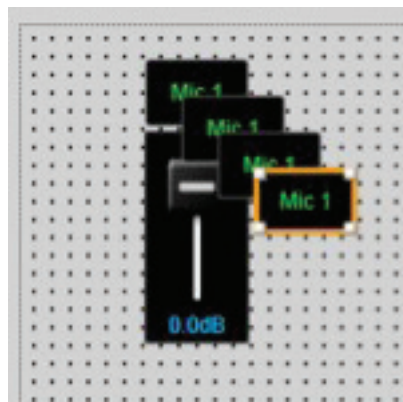
clicking+holding a corner of the text box and adjusting the box to desired size.

In our example this fader is for Mic 1.  
Enter the text and hit enter.



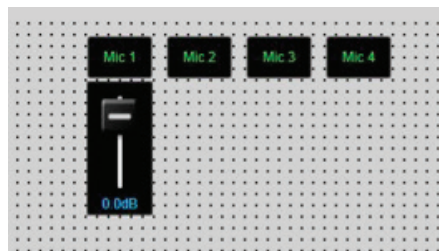
(fig2.12)

To add multiple controls in this window you can use standard Copy (Ctrl+C) and Paste (Ctrl+V) commands to place several labels in the widow for later use. The text can be added or edited as needed in the Component Properties. After the labels are created they can be arranged as desired.



(fig2.13)

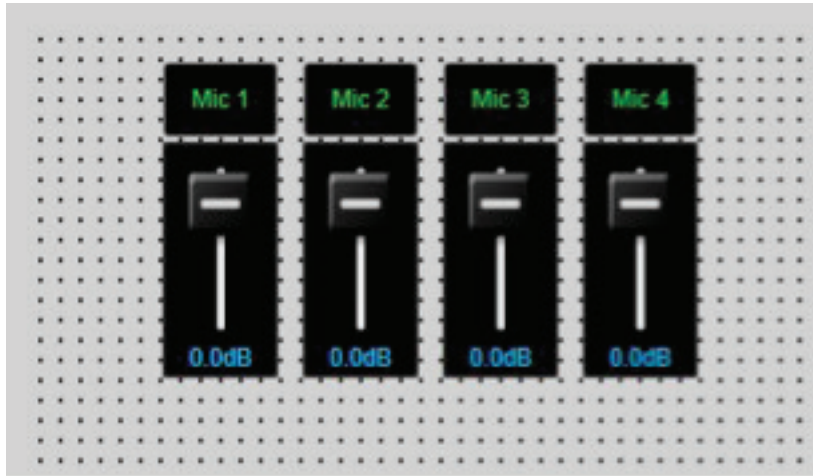
Labels cut and pasted



(fig2.14)

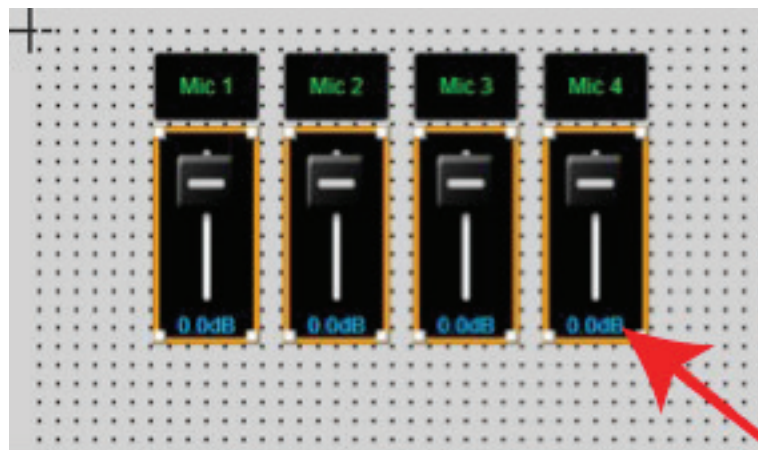
Labels can be renamed, arranged, and ready for the gain controls to be dragged into the BluePanel window.

In this example the remaining gain faders have been added



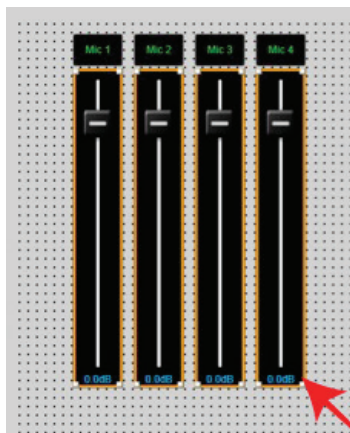
(fig2.15)

In cases where the faders are too short for precise adjustment stretch the faders to make a custom design page. Left (click+hold) the mouse and select all the faders



(fig2.16)

Grab any fader corner and stretch to a desired length



(fig2.17)



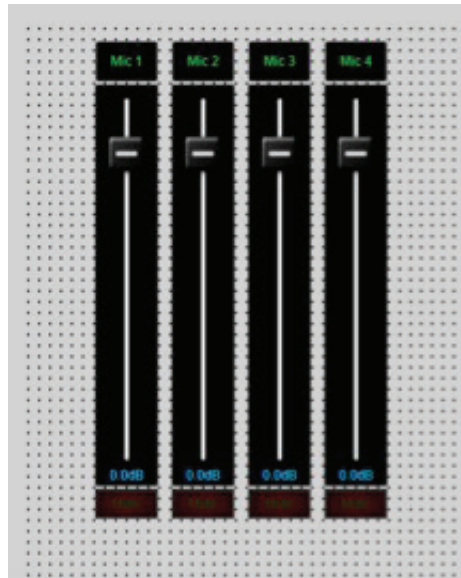
The process of building control pages within BluePanel can be repeated with most of the BlueBridge processing blocks.

To complete this page, mute buttons will be added in the same way as the faders (fig2.19)



(fig2.18)

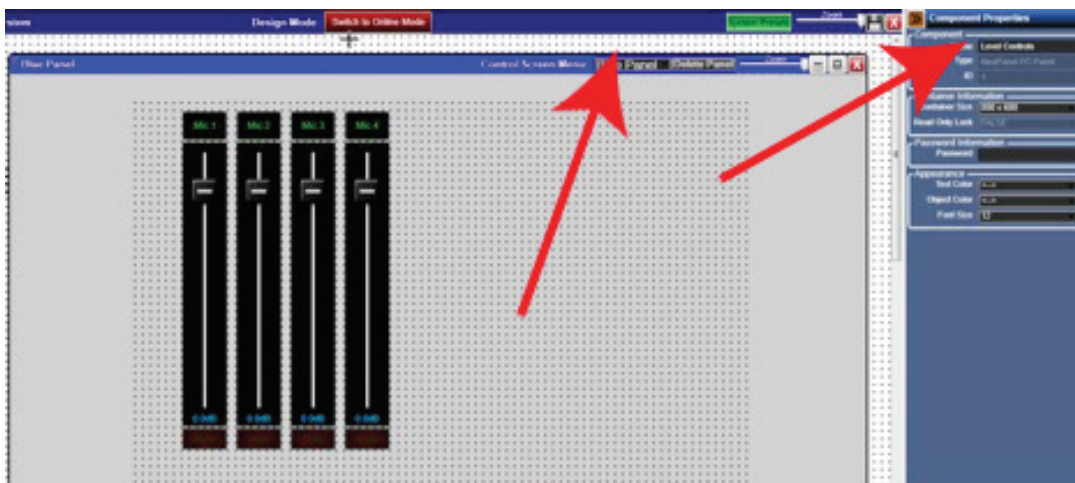
Open Mute Block and  
Select Mute button  
Drag and Drop onto BluePanel window



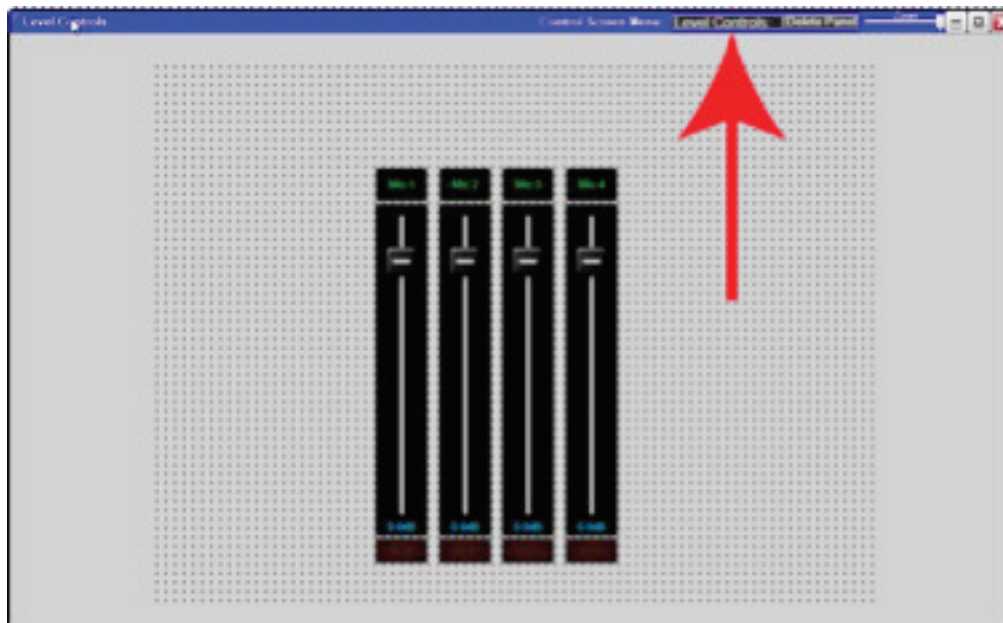
(fig2.19)

Finished Gain and Mute arrangement

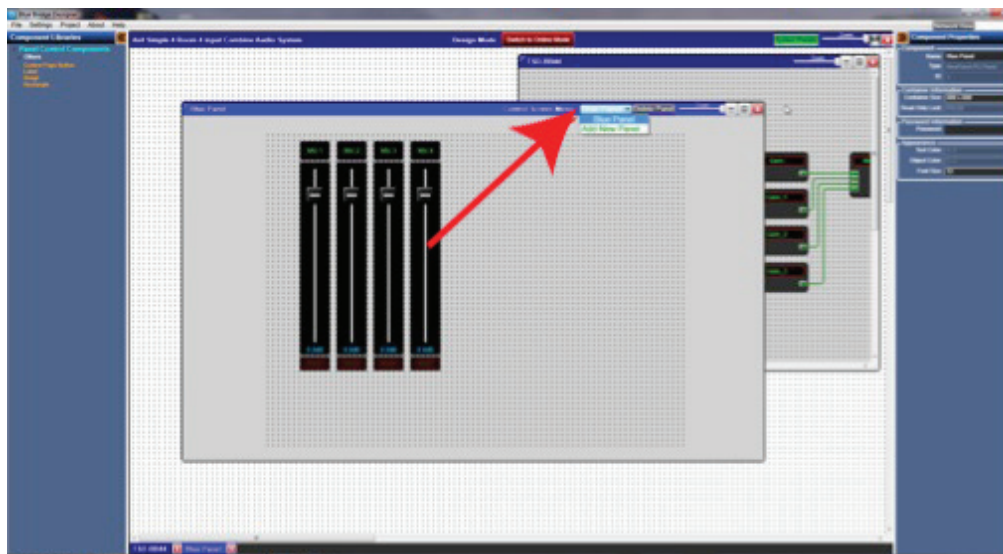
A name should be designated for a BluePanel once you have dropped control elements into the design.  
Go to Component Properties on the right column and give the panel a name.  
In this example the panel is called "Level Controls". Always save the changes by hitting "enter"



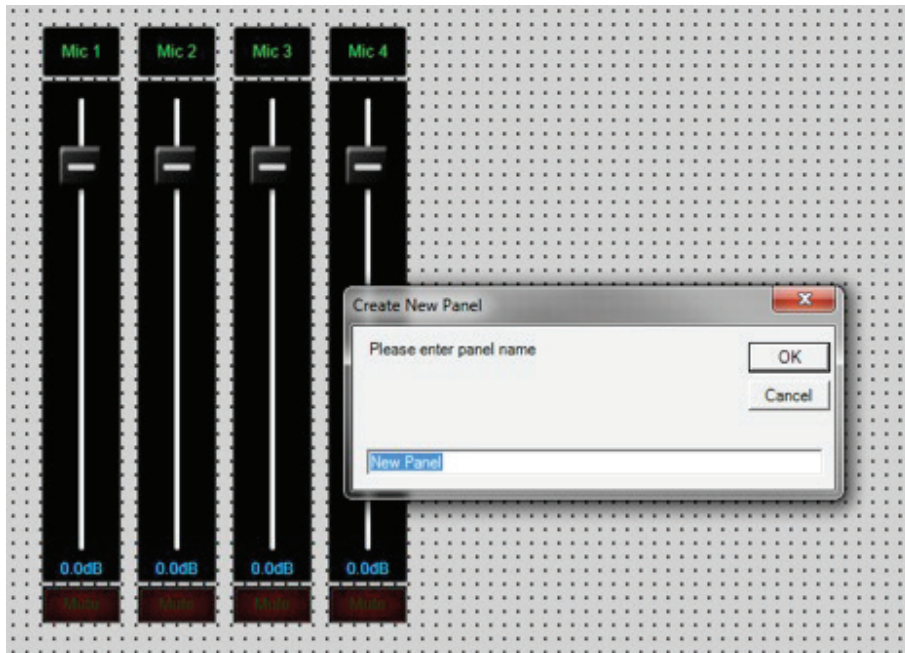
The new name will appear in the drop down menu  
(Note: be very careful not to click "Delete Panel" unless you really want it to delete)



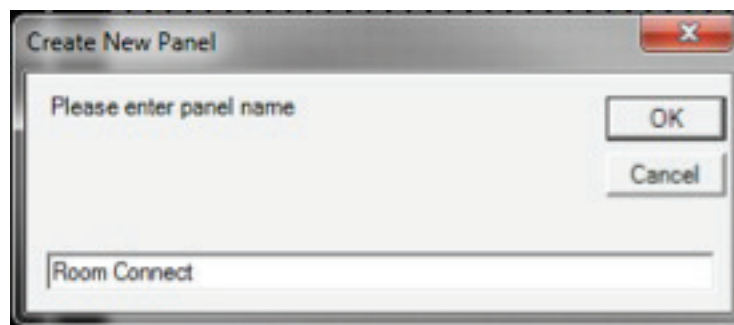
Additional panels or control screens can be added.  
Click the Control Screen Menu and select "Add New Panel"



A new dialogue box will open and ask for a name for the new Panel

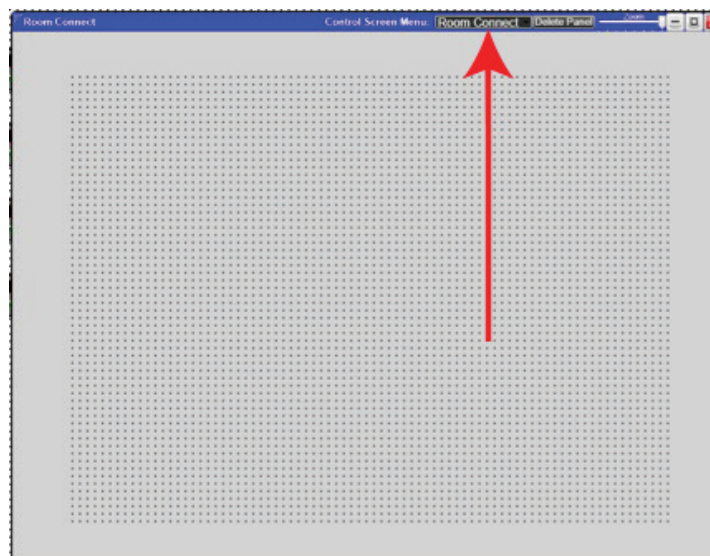


In this example we will be making a panel for combining rooms. The panel will be call "Room Connect"



Type in the desired name and select OK

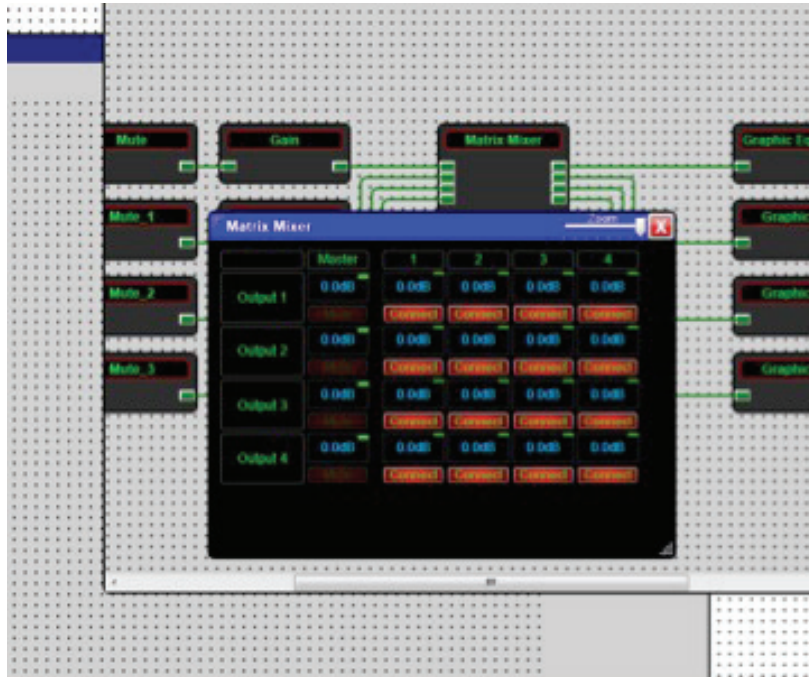
The new window will come up and the name entered in the create panel field in the create panel box will be displayed in the drop down menu bar.



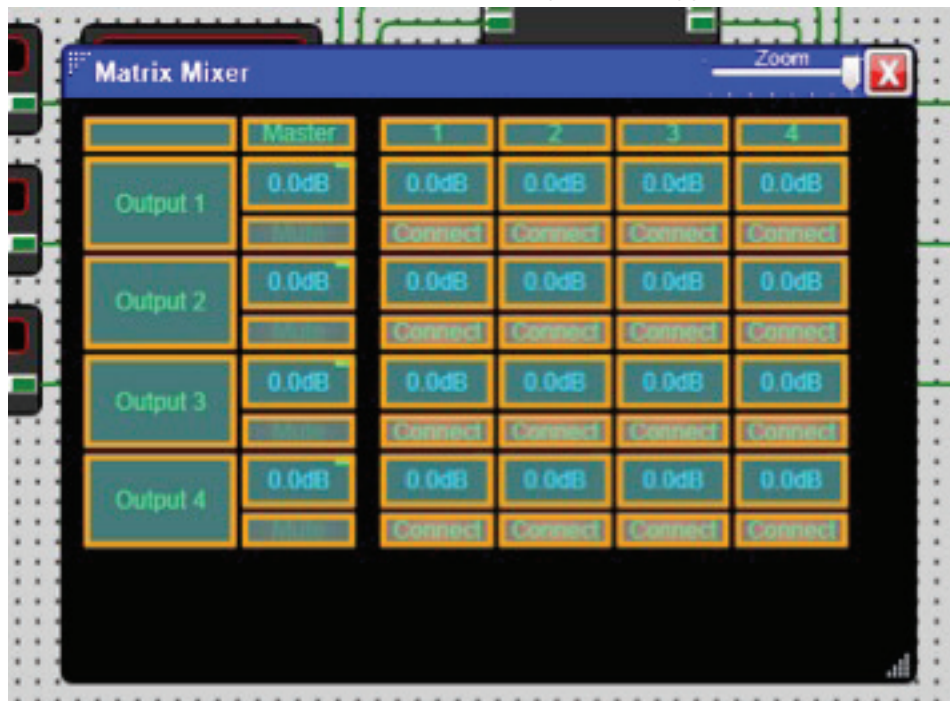


With a new panel or control screen go back to the system design file and add additional control elements to the BluePanel design. The Matrix is added by double left clicking on the Matrix block.

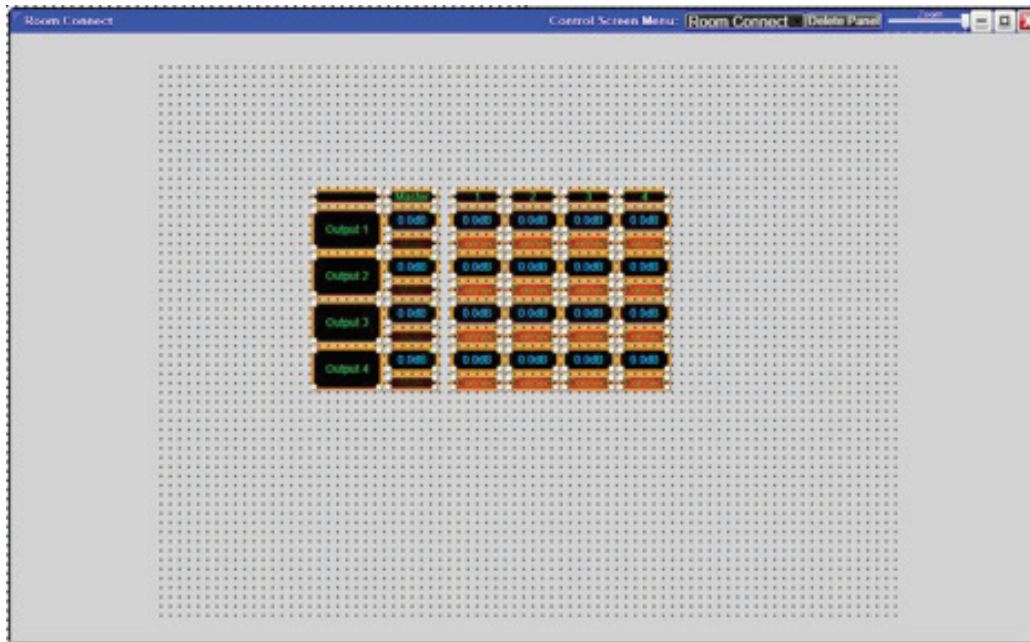
With the Matrix open, select the element Note: to save steps left click+hold and drag the mouse around all of the elements in the matrix to be included.



This example shows all of the control elements selected and ready to be dragged into the new BluePanel.

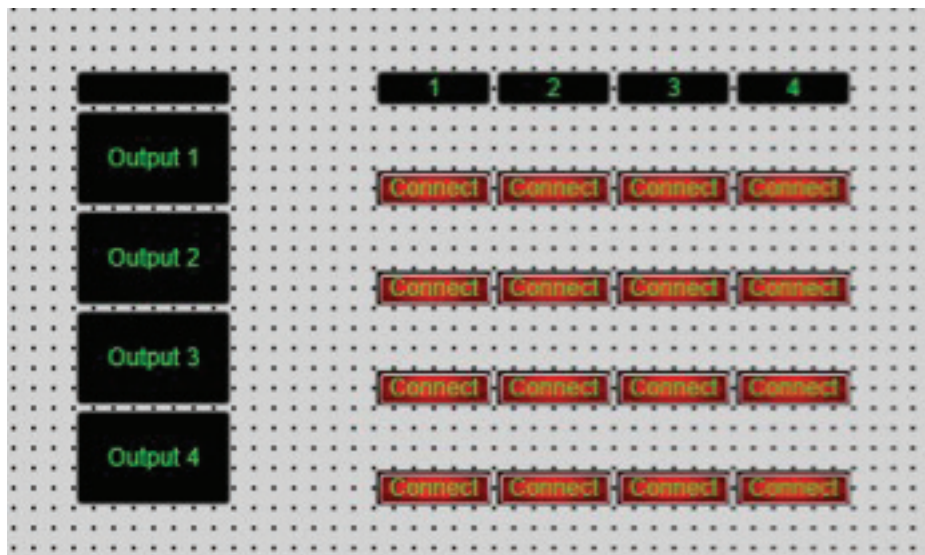


Drag the control elements into the new panel.



Only controls necessary for the user should be included in the BluePanel control. Including only the important functions will make the control simpler and easier to operate. Non-essential controls or elements can be removed by left clicking on the individual control element and selecting delete. Note: groups of controls can be selected and deleted.

This example shows the buttons with their assigned labels for this control panel

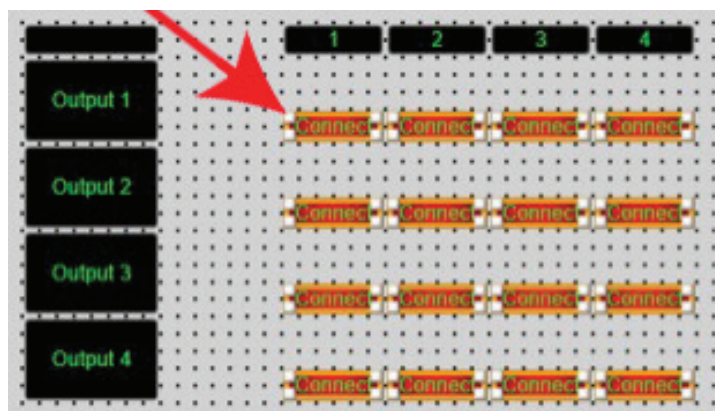


To make the control more user friendly resize and arrange the buttons

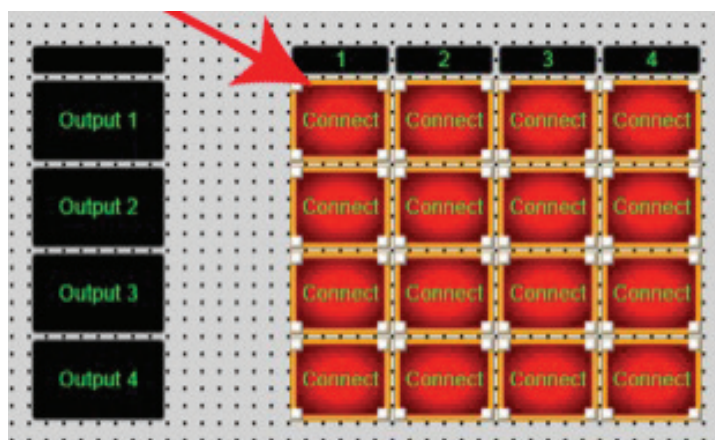
In this example, the Connect buttons can be enlarged for easier to operation.

First, select all of the connect buttons by left click+hold and drag the mouse around all of the Connect buttons. Next, left click+hold one of the corners and drag the buttons out to the desired size.

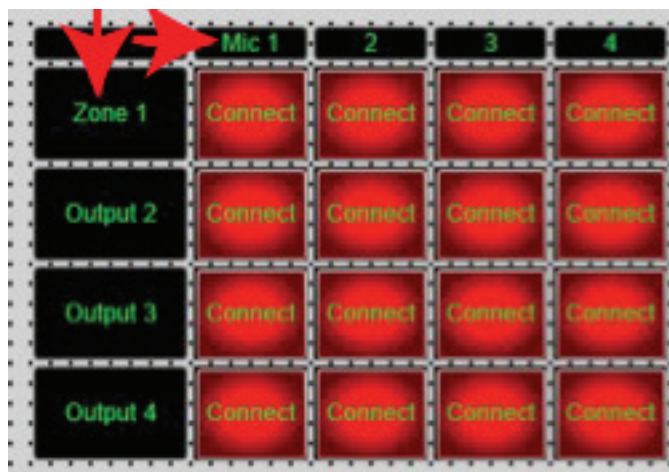




Arrange the buttons and move the labels as desired.

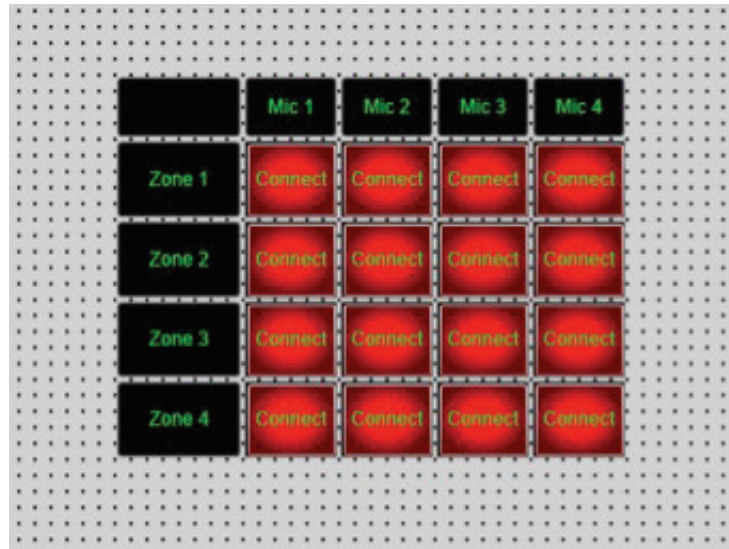


With the size and shape of control elements more clearly defined, additional editing of labels can be done in the properties dialogue column on the right of the designer software window.



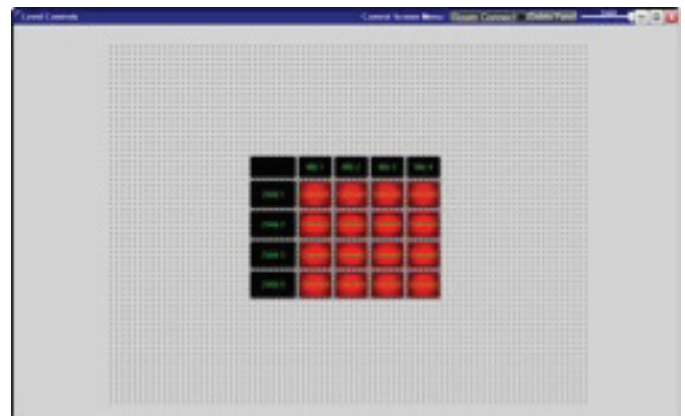
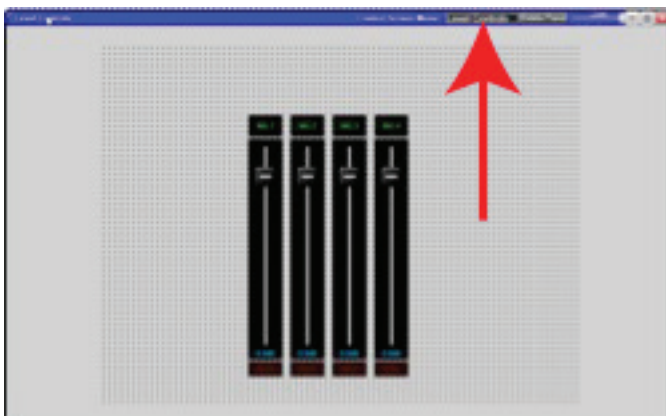


This is the finished BluePanel window arrangement we named "Room Connect."



The BluePanel control windows will look like this

You can toggle back and forth between your control panels from the drop down menu bar.



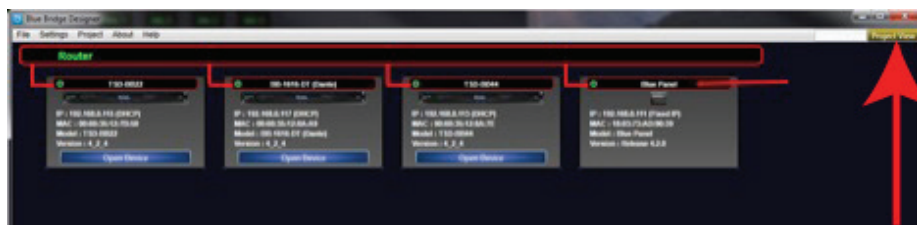
All the work done to this point has been in design mode and is now ready to "Map" this file to the actual Blue Panel that will control this audio system

While the design of a BluePanel control is done within the BlueBridge design software, the software used to operate a BluePanel control is a separate application. Once the design is complete, the file must be mapped to the actual BluePanel control using BluePanel software. Launch BluePanel software.

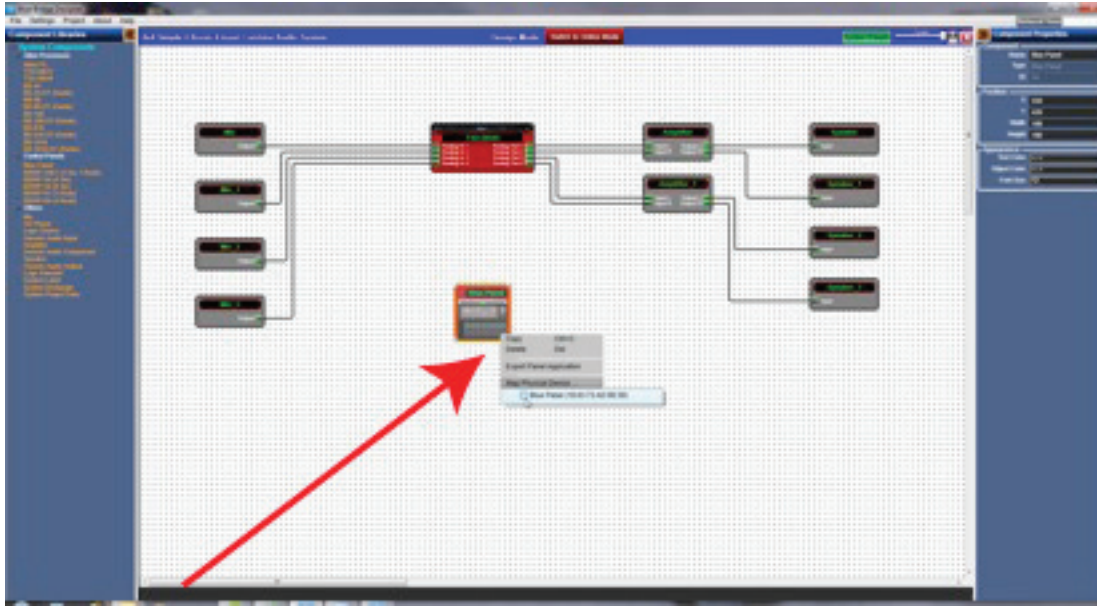
After launching the BluePanel application you will be able to see a BluePanel device in the network view as a piece of hardware or a controller.

The BluePanel application will appear as a piece of hardware.

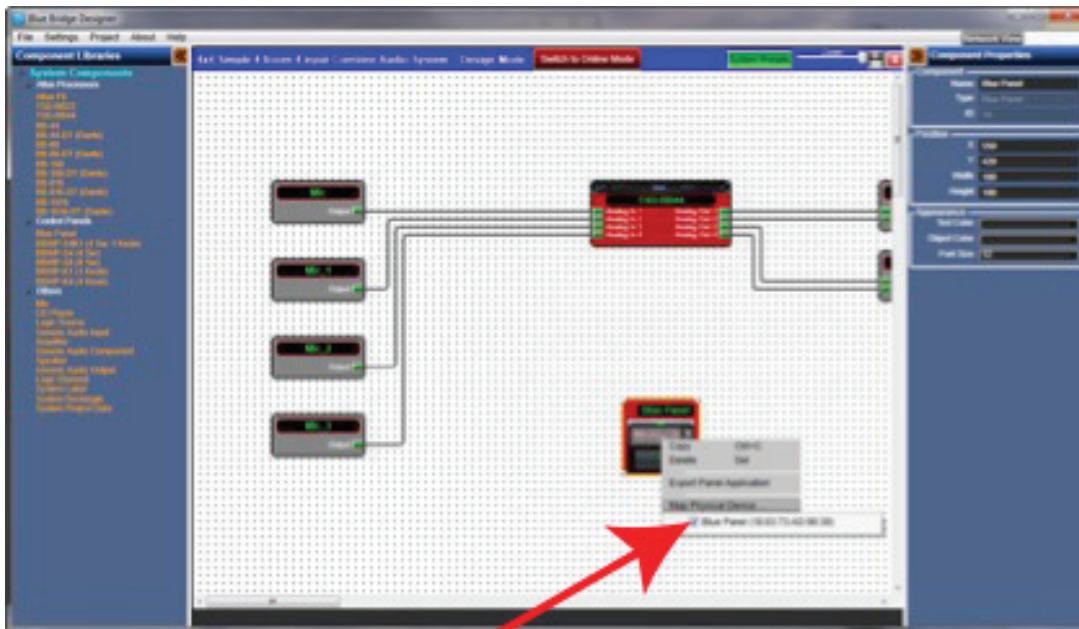
Go back to Project View to "MAP" the BluePanel design to the BluePanel "hardware" on the network.



Map the BluePanel by right clicking and selecting the BluePanel "Hardware" that is on the network

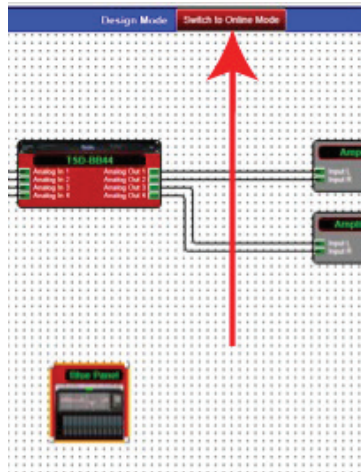


Note: Before Mapping, the BluePanel block is translucent or "see through".

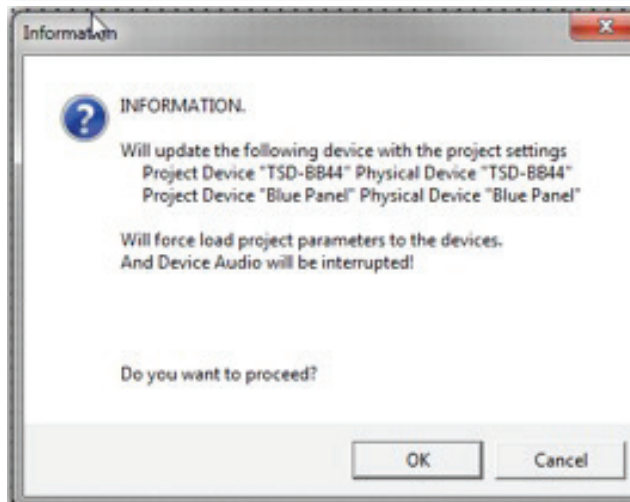
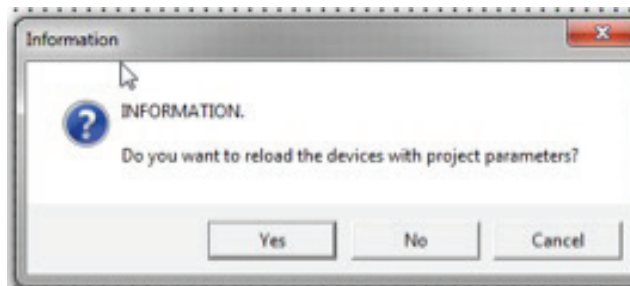
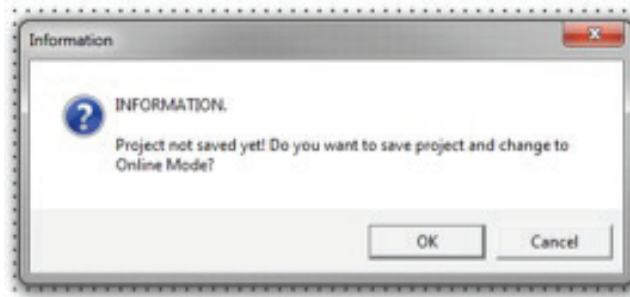


Note: After Mapping the BluePanel block becomes opaque.

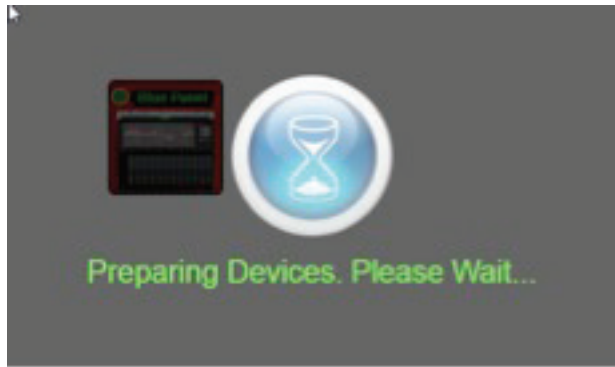
Now the design must be loaded into the BluePanel software.  
To load, click on the "Switch to Online Mode" button



A series of dialogue boxes will come up.  
Follow the prompts to load the design.



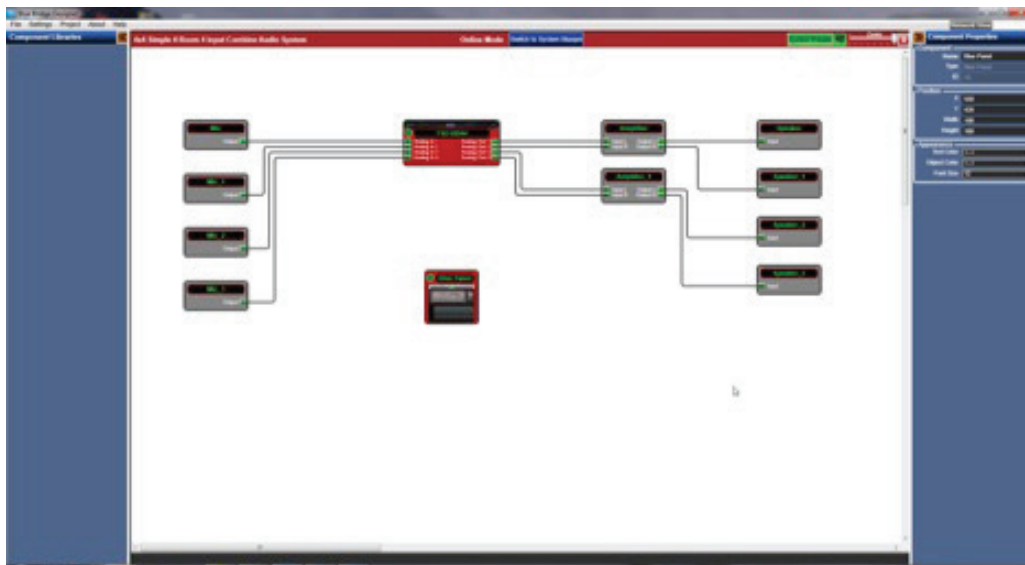




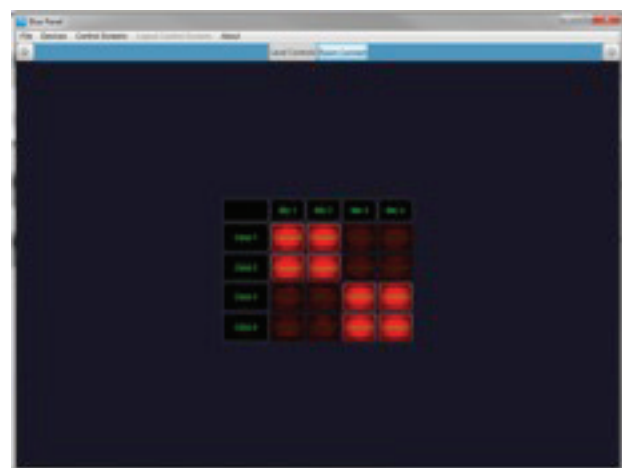
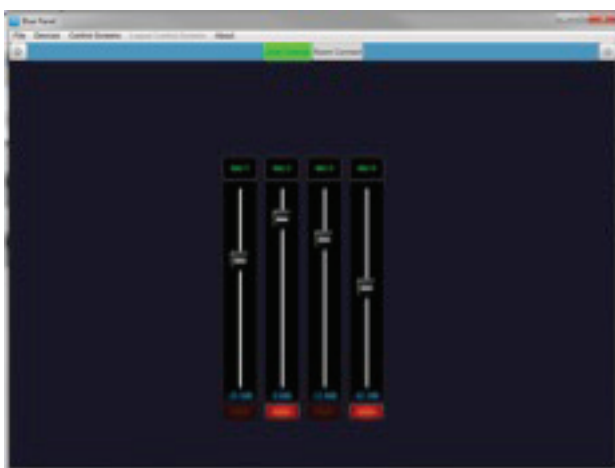
When the design file is loaded, the software will switch to “On Line Mode” allowing the design to be controlled. The audio system can be controlled in three different ways.

1. Double click on the DSP block and control all of the systems parameters.
2. Double click the BluePanel on the design page and control the parameters available on the BluePanel
3. Using the BluePanel application

The BluePanel application offers the best control option for the untrained user. The BluePanel application provides a simple and easy to use control interface that limits the untrained user to adjusting only the aspects of the system necessary. In addition, the user cannot inadvertently alter the audio portion of the program.



Example of the BluePanel application





## Touch Panel Configuration:

To create a BBWP-TOUCH7 control page, follow the same procedures used to create a BluePanel. When creating a BBWP-TOUCH7, drag and drop a BBWP-TOUCH7 Block into the control screen and follow the same rules and procedures to create a BBWP-TOUCH7.