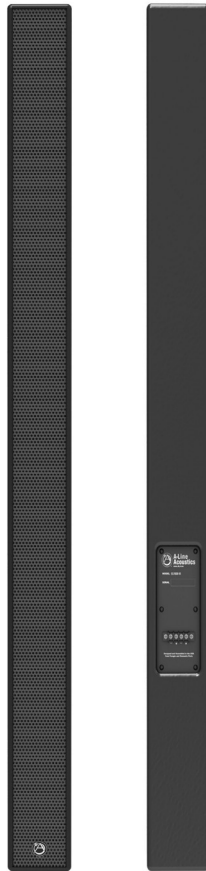




**Fixed Install A-Line Manual**



1601 Jack McKay Blvd. • Ennis, Texas 75119 U.S.A.  
Telephone: 800.876.3333 • Fax: 800.765.3435

## Fixed Install A-Line Manual

This manual covers use and mounting of all of the A-Line fixed install product.

EL1503I-B(W)

EJ2003I-B(W)

EJW115AI-B(W)

EJW115XI-B(W)

SW118AI-B(W)

SW118XI-B(W)

## Available Mounting Options (Sold Separately)

ALELB1-B(W) – Complete Wall bracket includes both top and bottom bracket and one set of extensions for small angled adjustments.

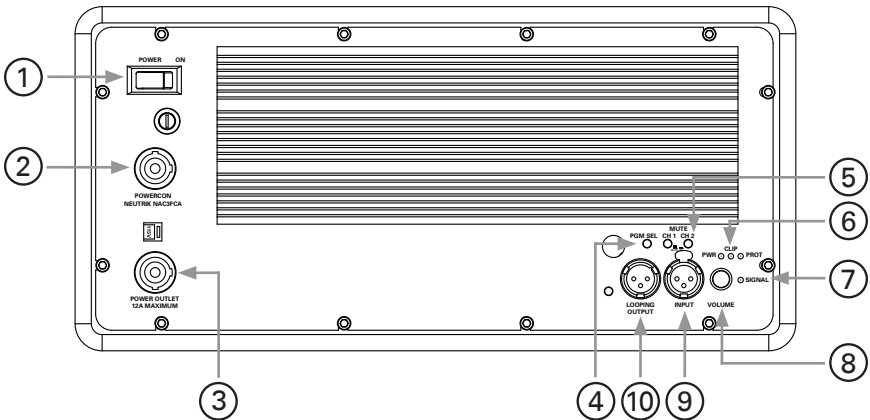
ALELCP-B(W) – Bracket to join two EJ2003I or two EL1503I together into a larger line column.

ALELWBEXT-B(W) – Extension kit to angle or add additional distance from the mounted wall bracket.

## Operation and Wiring of Fixed Install Systems

### Amplifier Connections

EJW115A-B Rear Panel



1. Power Switch – Turns unit power ON or OFF.

**Note: There are two programs loaded into the DSP at the factory: When switching between the two programs the power on the amplifier must be in the OFF position.**

2. PowerCON Input – Connect included PowerCON to 3 prong plug to this port in order to deliver electrical power to the amplifier.

3. PowerCON Output – Daisy chain multiple amplified speaker systems using this output reducing number of wall plugs required.

4. PGM SEL – There are two programs loaded into the DSP at the factory. When switching between programs, follow these steps:

- The amplifier power switch must be in the OFF position.
- Using the PGM SEL button, press it to the IN or OUT position to make selection.
- Turn the power button switch to the ON position and the new program selection will now be stored.
- When switching between the two programs, repeat the previous steps. If trying to change program with the power ON, the program will not change.



1601 Jack McKay Blvd. • Ennis, Texas 75119 U.S.A.  
Telephone: 800.876.3333 • Fax: 800.765.3435

Program button IN mode is typically used for speech and acoustic music.

Program button OUT mode is typically used for prerecorded music, with a + 4dB boost on the woofer cabinet.

5. MUTE CH1 & CH2 - There are two mute switches on the unit. When depressed, the channel is active and will play sound. CH1 controls the woofer and CH2 controls the line array. Press either button a second time to activate the mute function.
6. LED Indicators
  - PWR - Green LED indicates unit is receiving power from wall outlet.
  - CLIP - Yellow LED indicates that the unit is operating outside its normal range. Reduce output of source unit to avoid damaging speakers or other components.
    - NOTE: This unit can flash occasionally during normal use.**
  - PROT - Red LED indicates the amplifier is in Protect mode. Do not operate the unit when the red LED is illuminated.
7. SIGNAL LED - Green LED indicates the unit is receiving signal from the source unit.
8. Volume Control - Adjusts volume of the speaker unit in reference to the master volume set at the source/mixer, 0 to -36dB.
9. Input - XLR connection delivers signal from source unit.
10. Looping Output - XLR connection delivers signal from source unit.

Each active subwoofer cabinet can only power two line array loudspeakers and a single passive subwoofer.

**Note: For applications using stacked line column loudspeakers using the ALELCP, an active subwoofer cabinet is required for each side.**

## Wiring the System Elements

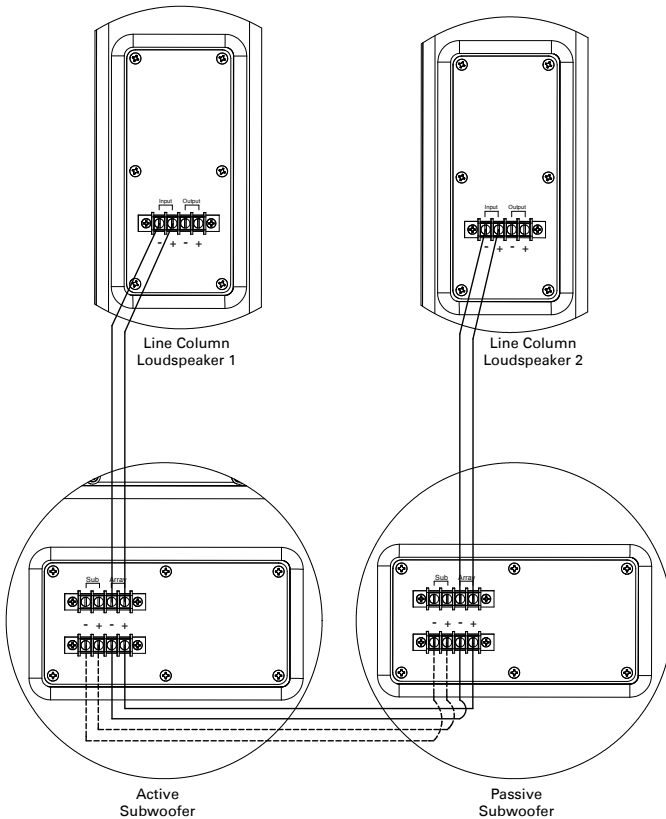
1. The active subwoofer has two barrier strip terminals below the amplifier. Use this wiring direction for connection of a single line column loudspeaker to the active subwoofer.
  - a. The barrier strips accept U terminals or bare speaker wire. AtlasIED recommends using 12-14 AWG twisted pair speaker wire for best performance.
  - b. The right side of the barrier strip terminal is designed to transfer high frequency signal to the line column loudspeaker. Either the top or the bottom terminal can be used and can be connected to the Input terminal on the line column loudspeaker.
  - c. Ensure the screws are screwed down tightly so they do not become disconnected.
2. Use this wiring direction for connection of a passive subwoofer and two line column loudspeakers to the active subwoofer.
  - a. The barrier strips accept U terminals or bare speaker wire. AtlasIED recommends using 12-14 AWG twisted pair speaker wire for best performance.
  - b. The left side of the barrier strip delivers signal to the passive subwoofer either top or bottom connections can be used.
  - c. The right side of the barrier strip terminal is designed to transfer high frequency signal to the line column loudspeakers. Either the top or the bottom terminal can be used and can be connected to the Input terminal on one of the line column loudspeakers.
  - d. The unused right side barrier strip terminal (top or bottom) needs to be connected to either the top or bottom terminal on the right side of the barrier strip on the passive subwoofer. Connection then needs to be made from the remaining right side barrier strip terminal to the Input on the second line column loudspeaker.
  - e. Ensure the screws are screwed down tightly so they do not become disconnected.



1601 Jack McKay Blvd. • Ennis, Texas 75119 U.S.A.  
Telephone: 800.876.3333 • Fax: 800.765.3435

3. Use this wiring direction for connection of a two line column loudspeakers to a single active subwoofer.
- The barrier strips accept U terminals or bare speaker wire. AtlasIED recommends using 12-14 AWG twisted pair speaker wire for best performance.
  - The right side of the barrier strip terminal is designed to transfer high frequency signal to the line column loudspeaker. Either the top or the bottom terminal can be used and can be connected to the Input terminal on the first line column loudspeaker.
  - Connect the output from the first line column loudspeaker to the input on the second line column speaker.
- Note: The input and output connections are in parallel, so as long as polarity is maintained the system will function properly.**
- Ensure the screws are screwed down tightly so they do not become disconnected.

This is just an example and there are other configurations possible.



1601 Jack McKay Blvd. • Ennis, Texas 75119 U.S.A.  
Telephone: 800.876.3333 • Fax: 800.765.3435

**Installation Instructions**

1. Position all speakers in the area where they need to be set up. Remember the advantage of the line column loudspeaker is its wide coverage pattern so place them so they offer optimum room coverage.
  - a. The subwoofer cabinets are designed to be floor mounted.
  - b. The line column loudspeakers can be wall mounted using the ALELB1 bracket.
  
2. Suspension & mounting or “flying” loudspeaker systems requires training and expertise. Improper rigging of a flying loudspeaker may result in injury, death, equipment damage, and legal liability. Installation must be carried out by fully qualified installers, in accordance with all required safety codes and standards at the place of installation. A 5:1 design factor is a generally accepted minimum standard. However, legal requirements for overhead suspension vary by municipality; please consult your local safety standards office before installing any product. We also recommend that you thoroughly check any laws and bylaws prior to installation. Loudspeakers flown in theaters, nightclubs, conference centers, or other places of work and entertainment must be provided with an independent, correctly rated and securely attached secondary safety — in addition to the principle suspension point(s). This secondary safety must prevent the loudspeaker from dropping more than (6”) should the principle suspension device fail. If you lack the skills, training, and proper ancillary equipment to fly a speaker system, do not attempt to do so.
  
3. Using ALELB1 Brackets
  - a. Mount brackets to the wall.



- i. Hardware to fasten the wall bracket to the wall is not included.
- ii. Use no less than 3 connections between the wall bracket and the mounting surface to ensure a secure mount.
- iii. The line column loudspeaker should then be bolted to the wall mounts using the included 5/16 bolts. These thread into the top and bottom of the line array elements.



1601 Jack McKay Blvd. • Ennis, Texas 75119 U.S.A.  
 Telephone: 800.876.3333 • Fax: 800.765.3435

Please see the below views for different mounting angles and position.

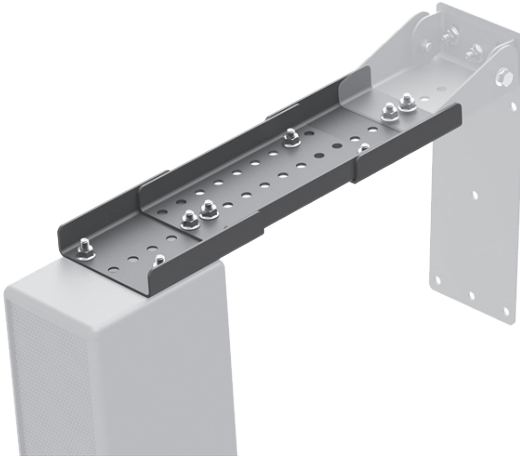


The wall brackets have a few mounting holes to change cabinet angle and or for adding the extension pieces.



1601 Jack McKay Blvd. • Ennis, Texas 75119 U.S.A.  
Telephone: 800.876.3333 • Fax: 800.765.3435

Angling the loudspeaker can be accomplished using the included extension pieces in the ALELB1 kit. The kit includes hex nuts to lock the extension plates in place. The extension plates have built in pem bolts for easy assembly. When assembling the extension, place the two single file pem bolts towards the wall, and tighten them to the wall bracket first. See the below view for detail of the complete ALELB1 kit.

**Top View**

Complete view of element connected to the wall (EJ2003I-B).



1601 Jack McKay Blvd. • Ennis, Texas 75119 U.S.A.  
Telephone: 800.876.3333 • Fax: 800.765.3435

Multiple extension kits (ALELWBEXT) can be added to achieve the desired placement /angle of the line array elements.



Two line array elements can be connected together using the ALELCP. This Bracket includes two "L" plates and twenty #8 screws to lock the two cabinets together. The below illustration shows how the brackets can combine line column loudspeakers. The ALELCP bracket can connect either two EJ2003I or two EL1503I loudspeakers.

1. Place the two cabinets together, so they are flush front to back.
2. Take the connector plates and screw them to the cabinet using the included twenty #8 wood screws.





See below view of two line column loudspeakers connected together using the ALELCP, while connected to the ALELB1 wall mounting brackets.



1601 Jack McKay Blvd. • Ennis, Texas 75119 U.S.A.  
Telephone: 800.876.3333 • Fax: 800.765.3435





## Limited Warranty

All products manufactured by AtlasIED are warranted to the original dealer/installer, industrial or commercial purchaser to be free from defects in material and workmanship and to be in compliance with our published specifications, if any. This warranty shall extend from the date of purchase for a period of three years on all AtlasIED products, including SOUNDOLIER brand, INNOVATIVE ELECTRONIC DESIGNS brand, and AtlasIED brand products except as follows: one year on electronics and control systems; one year on replacement parts; and one year on Musician Series stands and related accessories. Additionally, fuses and lamps carry no warranty. AtlasIED will solely at its discretion, replace at no charge or repair free of charge defective parts or products when the product has been applied and used in accordance with our published operation and installation instructions. We will not be responsible for defects caused by improper storage, misuse (including failure to provide reasonable and necessary maintenance), accident, abnormal atmospheres, water immersion, lightning discharge, or malfunctions when products have been modified or operated in excess of rated power, altered, serviced or installed in other than a workman like manner. The original sales invoice should be retained as evidence of purchase under the terms of this warranty. All warranty returns must comply with our returns policy set forth below. When products returned to AtlasIED do not qualify for repair or replacement under our warranty, repairs may be performed at prevailing costs for material and labor unless there is included with the returned product(s) a written request for an estimate of repair costs before any nonwarranty work is performed. In the event of replacement or upon completion of repairs, return shipment will be made with the transportation charges collect.

EXCEPT TO THE EXTENT THAT APPLICABLE LAW PREVENTS THE LIMITATION OF CONSEQUENTIAL DAMAGES FOR PERSONAL INJURY, ATLASIED SHALL NOT BE LIABLE IN TORT OR CONTRACT FOR ANY DIRECT, CONSEQUENTIAL OR INCIDENTAL LOSS OR DAMAGE ARISING OUT OF THE INSTALLATION, USE OR INABILITY TO USE THE PRODUCTS. THE ABOVE WARRANTY IS IN LIEU OF ALL OTHER WARRANTIES INCLUDING BUT NOT LIMITED TO WARRANTIES OF MERCHANTABILITY AND FITNESS FOR A PARTICULAR PURPOSE.

AtlasIED does not assume, or does it authorize any other person to assume or extend on its behalf, any other warranty, obligation, or liability. This warranty gives you specific legal rights and you may have other rights which vary from state to state.

## Service

Should your line column loudspeaker require service, please contact the AtlasIED warranty department at 1-877-689-8055, ext. 277 or support.atlissound.com to obtain an RA number.

AtlasIED Tech Support can be reached at 1-800-876-3333 or support.atlasied.com.

Visit our website at [www.AtlasIED.com](http://www.AtlasIED.com) to see other AtlasIED products.

©2016 Atlas Sound L.P. and Innovative Electronic Designs, LLC. All Rights Reserved.

Atlas Sound is a trademark of Atlas Sound L.P. IED is a registered trademark of Innovative Electronic Designs, LLC. All other trademarks are the property of their respective owners. All specs are subject to change without notice.  
21A10490 – AW0015254 ATS005392 RevA 1/16



1601 Jack McKay Blvd. • Ennis, Texas 75119 U.S.A.  
Telephone: 800.876.3333 • Fax: 800.765.3435