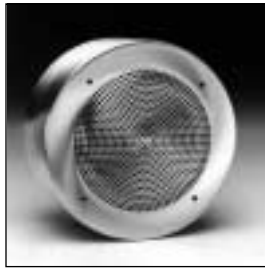


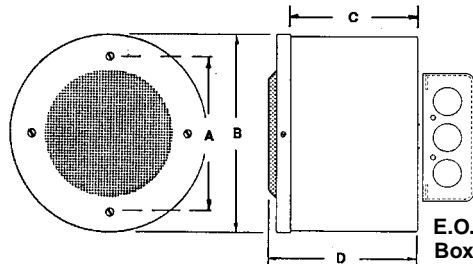


# UNIDIRECTIONAL AND BI-DIRECTIONAL SURFACE BAFFLES FOR 4" AND 8" LOUDSPEAKERS

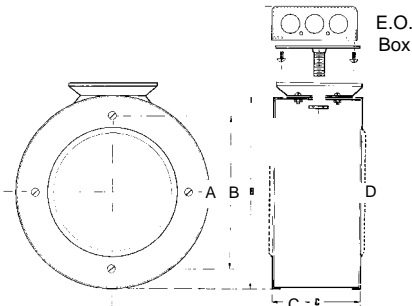
410 Series  
510 Series



410 Series



510 Series



## FEATURES

- Ideal for Corridor Applications Where Surface Mounting Space is Limited
- Attractive, Non-Rusting Aluminum Construction
- Choose from Unidirectional or Bi-directional Models for 4" (102mm) or 8" (203mm) Loudspeakers

## APPLICATIONS

Atlas Sound 410 and 510 Series cylindrical baffle/enclosures are designed for surface applications where mounting space is limited. Units may be wall or ceiling mounted in school and medical-facility corridors, office hallways, outdoor breeze-ways, or wherever unidirectional or bi-directional sound dispersion is desired.

## GENERAL DESCRIPTION

**410 Series.** Compact unidirectional aluminum baffle/enclosure with one-piece grille provides long lasting service indoors or out. Sturdy assembly features a spun .038 aluminum housing and mounts easily to walls, ceilings, or to 4" (102mm) octagon E.O. boxes (manufactured by others). Model 410-4 accommodates a standard 4" (102mm) loudspeaker; Models 410-8 and 410-8W mount a standard 8" (203mm) loudspeaker. Baffle interior is undercoated and patch-jute lined to prevent mechanical and acoustical resonance. Assemblies are finished in satin aluminum or textured white (W) epoxy where noted.

**510 Series.** These compact aluminum baffle/enclosures are identical to the 410 Series (above) with the addition of a circular mounting canopy complete with mounting hardware and second grille to enable bi-directional sound dispersion. Model 510-4 mounts a standard 4" (102mm) loudspeaker; Models 510-8 and 510-8W mount a standard 8" (203mm) loudspeaker. Aluminum housing is patch-jute lined and undercoated to allow clear, audible loudspeaker performance by preventing mechanical and acoustic resonance. One grille per unit includes studs for convenient loudspeaker mounting. Complete assembly installs to a 4" (102mm) octagon E.O. box (by others). Finished in satin brushed aluminum or textured white (W) epoxy where noted.

## ARCHITECT AND ENGINEER SPECIFICATIONS

Baffle shall be Atlas Sound Model \_\_\_\_ [410-4, 510-4 for 4" (102mm) loudspeakers; 410-8(W), 510-8(W) for 8" (203mm) loudspeakers]. It shall be of (uni-directional, bi-directional) design. Housing shall be manufactured of spun .038 aluminum and the interior shall be undercoated and patch-jute lined to prevent mechanical and acoustical resonances. Loudspeaker grilles shall be of one-piece construction. One grille per model shall include provisions to mount Atlas Sound (4" or 8") loudspeaker Model \_\_\_\_\_. Baffle shall be finished in (satin brushed aluminum or textured white epoxy). Dimensions shall be \_\_\_\_\_. Assembly shall mount to a standard 4" octagon E.O. box (by others).

## SPECIFICATIONS

MODEL	MOUNTING TYPE	SPEAKER SIZE	DIMENSIONS				MOUNTS	WEIGHT
			(A)	DIAMETER (B)	DEPTH (C)	PROJECTS (D)		
410-4	Unidirectional	4" (102mm)	4 <sup>11</sup> / <sub>16</sub> " (119mm)	6" (152 mm)	4 <sup>1</sup> / <sub>4</sub> " (108mm)	4 <sup>1</sup> / <sub>2</sub> " (114mm)	4"	0.5 Lbs. (.23kg)
410-8(W)*	Unidirectional	8" (203mm)	7 <sup>5</sup> / <sub>16</sub> " (194mm)	9 <sup>9</sup> / <sub>16</sub> " (237mm)	4 <sup>7</sup> / <sub>16</sub> " (113mm)	4 <sup>13</sup> / <sub>16</sub> " (122mm)	Octagon	1.0 Lb. (.45kg)
510-4	Bi-directional	4" (102mm)	4 <sup>11</sup> / <sub>16</sub> " (119mm)	6" (152mm)	4 <sup>3</sup> / <sub>4</sub> " (121mm)	6 <sup>3</sup> / <sub>16</sub> " (162mm)	E.O.	.0.7 Lbs. (.3kg)
510-8(W)*	Bi-directional	8" (203mm)	7 <sup>5</sup> / <sub>16</sub> " (194mm)	9 <sup>9</sup> / <sub>16</sub> " (237mm)	5 <sup>1</sup> / <sub>4</sub> " (133mm)	10" (254mm)	Box	1.2 Lbs. (.54kg)

\* Note: (W) denotes textured white epoxy finish. Standard finish is satin aluminum.

Specifications subject to change without notice



1601 JACK MCKAY BLVD. / ENNIS, TEXAS 75119 U.S.A. / TELEPHONE: (800) 876-3333 / FAX (800) 765-3435